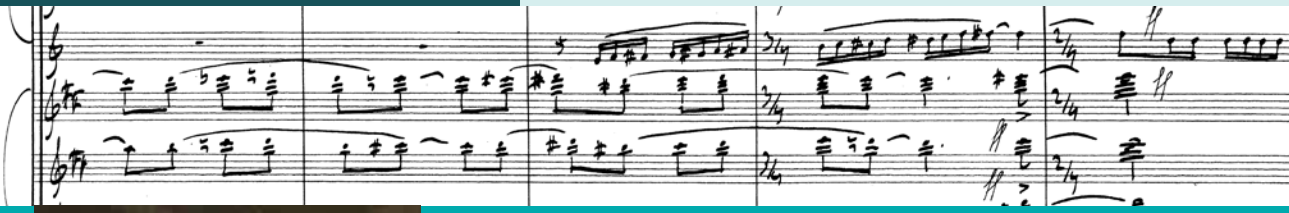


BOHUSLAV MARTINŮ



THE COMPLETE EDITION



Bärenreiter publishes **The Bohuslav Martinů Complete Edition (BMCE)**, a scholarly critical edition that presents the complete oeuvre of this major twentieth century composer for the first time, encompassing Martinů's works in all their versions and arrangements, including newly discovered and previously unpublished compositions.

The present situation regarding the publications of Bohuslav Martinů (1890–1959) is complex. A large number of different publishers in the Czech Republic, Germany, Austria, France, England and the United States currently hold the copyright to Martinů's works. Many publications are only available in deficient first editions that are fifty or more years old, some containing unauthorised editorial amendments. Furthermore, many early editions have been out of print for several decades and are thus practically inaccessible to the general public. Some works have also never been typeset; instead publishers distribute them only in the form of reproductions of manuscript copies or the composer's barely legible autographs.



Each cloth-bound volume (25.5 x 32.5 cm) includes a detailed Foreword and a Critical Report, both in English and Czech, sometimes also an Appendix.

The Structure

Approximately 100 volumes (indicated by Arabic numerals) are divided into seven series (indicated by Roman numerals):

- I Stage works and film music (approx. 43 volumes)
- II Orchestral music (approx. 16 volumes)
- III Concertos and other concertanto works (approx. 17 volumes)
- IV Chamber music (approx. 9 volumes)
- V Keyboard works (approx. 3 volumes)
- VI Choral works and songs (approx. 8 volumes)
- VII Supplements and varia (approx. 1 volume)

The Team

Commissioned by the **Bohuslav Martinů Foundation** in Prague, the BMCE is edited by the **Bohuslav Martinů Institute**.
Director of the Institute: Aleš Březina

Editorial Board

as of September 2018

Peter Ackermann, Aleš Březina, Jarmila Gabrielová, Jonáš Hájek, Denis Herlin, Kateřina Maýrová, Daniela Philippi, Ivana Rentsch, Giselher Schubert, Arne Stollberg, Eva Velická, Paul Wingfield, Jitka Zichová, Vít Zouhar, Pavel Žůrek

The First Ten Volumes

as of September 2018

Series VI/2/1	<i>The Epic of Gilgamesh</i> H 351, ed. Aleš Březina	already published	BA 10571-01
Series II/1/4	<i>Symphony No. 4</i> H 305, ed. Sharon Andrea Choa	already published	BA 10572-01
Series VI/2/2	<i>The Spectre's Bride</i> H 214A, <i>Field Mass</i> H 279, ed. Paul Wingfield		BA 10573-01
Series IV/4/1	Chamber Music for 6–9 Instruments I, ed. Jitka Zichová <i>Les Rondes</i> H 200, <i>Serenade No. 1</i> H 217, <i>Serenade No. 3</i> H 218, <i>Stowe Pastorals</i> H 335, <i>Nonet No. 2</i> H 374	already published	BA 10574-01
Series VI/2/3	Chamber Cantatas, ed. Vít Zouhar <i>Opening of the Springs</i> H 354, <i>The Legend of the Smoke from Potato Tops</i> H 360, <i>A Dandelion Romance</i> H 364, <i>Mikesh from the Mountains</i> H 375	already published	BA 10575-01
Series IV/3/2	String Quartets II, ed. Aleš Březina et al. <i>String Quartets No. 4</i> H 256, <i>No. 5</i> H 268, <i>No. 6</i> H 312, <i>No. 7 (Concerto da camera)</i> H 314	already published	BA 10576-01
Series III/2/4	Quadruple Concertos ed. Christopher Hogwood†, Pavel Žůrek, Marek Pečač <i>String Quartet with Orchestra</i> H 207, <i>Sinfonia Concertante No. 2</i> H 322	already published	BA 10577-01
Series III/1/7	<i>Concerto da camera for Violin, String Orchestra, Piano and Percussion</i> H 285, <i>Rhapsody-Concerto for Viola and Orchestra</i> H 337		BA 10578-01
Series III/1/6	Piano Concertos I <i>Incantation. Concerto for Piano and Orchestra No. 4</i> H 358, <i>Concerto in B-flat major for Piano and Orchestra (Fantasia concertante)</i> H 366		BA 10579-01
Series I/1/12	<i>Ariane</i> , lyric opera in one act H 370		BA 10580-01

The Sources

The Bohuslav Martinů Complete Edition endeavours to present the composer's intentions in their full breadth. It makes hitherto unknown versions of works accessible and provides detailed insight into Martinů's elaborate process of composition. It employs the most advanced editorial methods, which are suited to the needs of both researchers and musicians.

The source materials for most of Martinů's works are scattered among private and public archives and institutions in many different countries. Since 1994, these sources have been collected and processed by the Bohuslav Martinů Institute in Prague. The BMCE evaluates all the available musical and non-musical sources, which include autographs, printed scores, engraver's copies, contemporary reproductions, drafts, partcells, manuscript copies, the

composer's extensive correspondence, as well as sound recordings, pictures, films, and other documents.

The main musical text of each work depicts the "last authorised version". The edition also presents variant original versions of the whole or parts of the compositions, especially in cases where changes made by performers, producers, or publishers were authorised by the composer and are clearly documented in the sources.

Subscription Offer

The volumes are available for a discount with a complete or partial subscription plan. They can also be purchased separately.



Bärenreiter

www.baerenreiter.cz • info@baerenreiter.cz • www.baerenreiter.com

Bärenreiter Praha s. r. o.

náměstí Jiřího z Poděbrad 112/19, 130 00 Praha 3
tel.: +420 274 001 911 • fax: +420 222 220 829